

Installation Instructions AERO V-LED

Catalogue Number	Lamp	Power Factor
ATS Aero VLED Series Aeroscreen	LED	> 0.9
Optical & Gear Chamber IP65	ta 40 C	




IMPORTANT: Read instructions before installing fixture. Retain for future reference

Upon receipt of fixture, compare the catalogue description listed on the packing slip with the fixture label on the housing to ensure you have received the correct merchandise.

EYE SAFETY

These Luminaires use high-brightness LED. Precautions must be taken to avoid eye damage. Do not look directly into any operating LED component.

 The light source contained in this luminaire shall only be replaced by Aldridge Traffic Systems (ATS), or service provider approved by ATS.

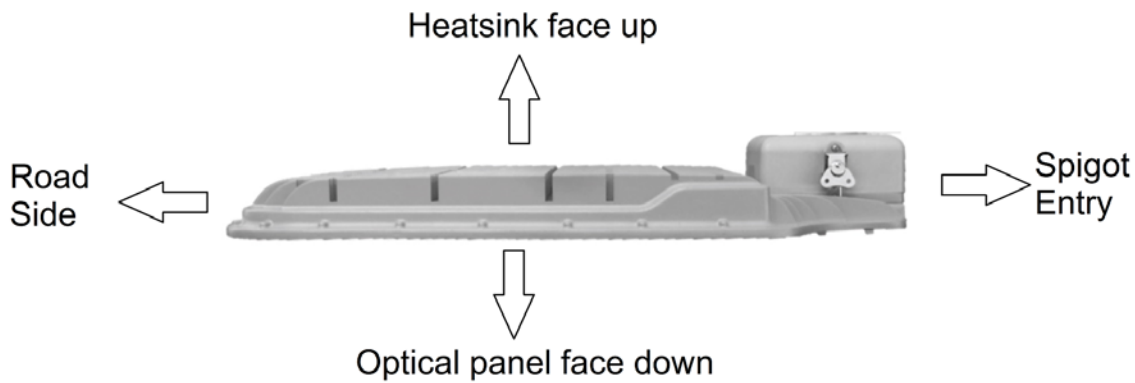
ELECTRICAL SAFETY **Caution, risk of electric shock!**

This fixture must be wired in accordance with all relevant Australian Standards. Proper Earthing is required to ensure personal safety. All work should be undertaken by a qualified electrician.

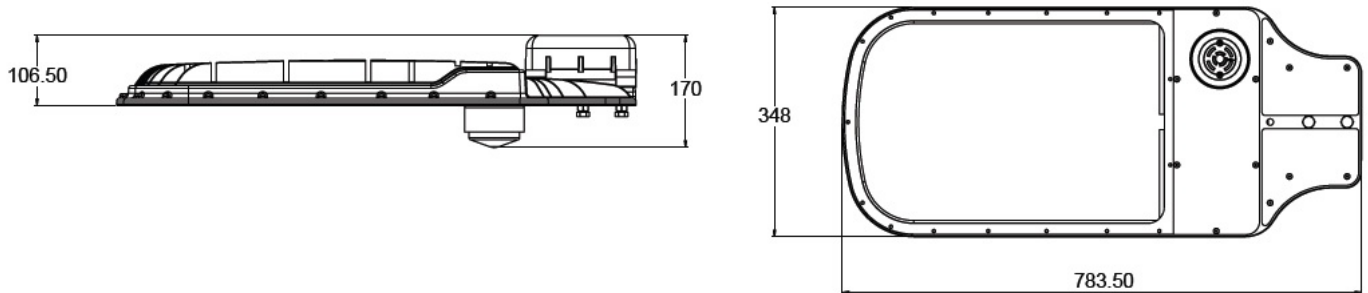




DESIGN ATTITUDE



DIMENSION (in mm)



Maximum projected Area: 0.272 m sq

⚠️ Maximum Mounting Height: 15 Meters. Do not install exceeding this height.



INSTALLATION

⚠ WARNING: Ensure that power is OFF (Disconnect both Active and Neutral) before starting installation or attempting any maintenance.

⚠ A torque wrench is required for correct installation on the spigot.

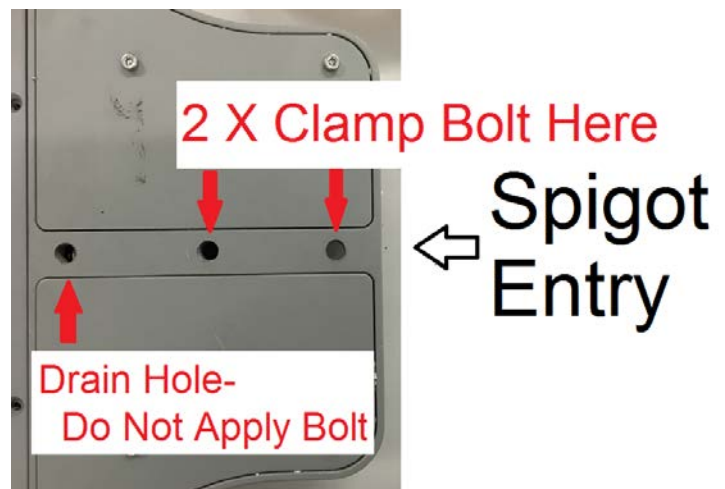
⚠ The luminaire has a combined weight of
14 kg (with integrated control gear in light fitting)
13 kg (light fitting only) with external control gear tray
Handle appropriately. Take care not to drop the luminaire during installation or removal from the pole. Due to the weight of the luminaire, 2 people may be necessary during installation.

⚠ Take care not to damage the glass lens of the luminaire during installation. Avoid contact between hard or heavy objects and the lens surface.

1. Fit the two spigot clamp bolts (B) and lock nuts in the location as shown.

2. Pass the supply cable down the spigot of the lighting pole.

3. Mount luminaire to the spigot ensuring that the spigot is fully inserted.



4. When mounting luminaire, ensure that spigot entry is free from all obstruction, inclusive of cables.





5. Support the luminaire to ensure correct seating of the spigot within the spigot bridging clamp. Tighten the clamp bolts in the location shown until both are snug with the spigot. (Do not fully tighten). Ensure correct alignment of the luminaire.
6. Then with the torque wrench, fully tighten each clamp bolt. Tighten both locknuts (C).

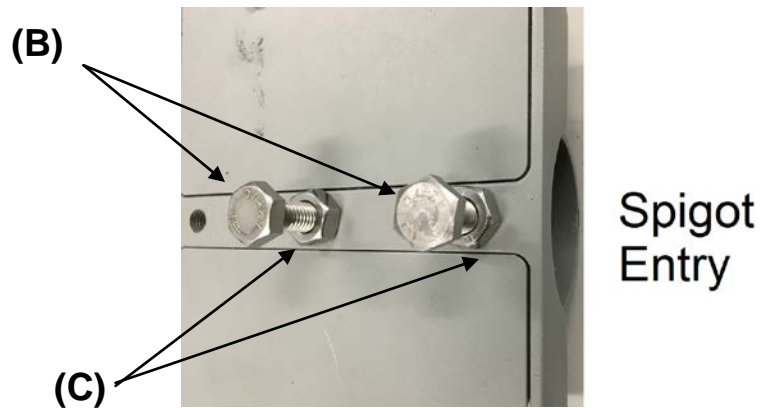


Figure 1



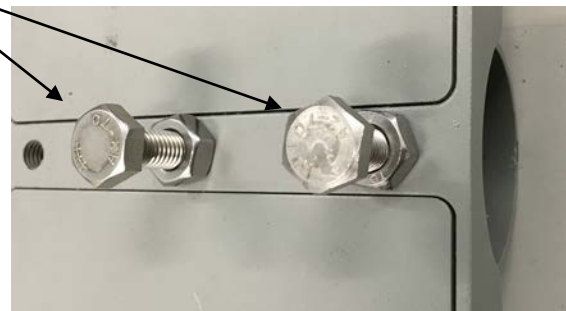
Note: Clamp Bolts to be tightened to torque of 30Nm.



Tighten to
30Nm



Do Not
Exceed
30Nm





WIRING CONNECTION

1. At the Spigot adaptor terminal block, tunnel the input power cable via cable guide and make the following electrical connections on the terminal block as labeled :
 - a. Connect supply earth to luminaire earth “E”
 - b. Connect supply neutral to luminaire neutral “N”
 - c. Connect supply active to luminaire active “A”
 - d. Ensure cable is properly anchored using supplied cable tie attached to the side of terminal block



Standard terminal block



Fused Terminal block

Note the light fitting can be provided in standard 3 port terminal block or fused terminal block on Active depending on models.

2. Close the spigot lid and lock the butterfly latch to catch plate tightly



3. For unit fitted with the optional item of NEMA base with Bridging plug, the Bridging plug is packed separately in the box of light fitting for shipment. Installer needs to attach the Bridging plug to the receptacle located on the bottom of the light fitting, in order for the unit to operate.
4. Verify correct operation of the luminaire.

⚠ DO NOT PERFORM HV INSULATION RESISTANCE TEST (MEGGER) ON THE LIGHTING CIRCUIT WITH THE LUMINAIRE CONNECTED. THIS WILL DAMAGE THE LUMINAIRE ELECTRONICS AND VOID ALL WARRANTIES.

REMOVAL

⚠ WARNING: *Ensure that power is OFF (Disconnect both Active and Neutral) before starting installation or attempting any maintenance.*

1. Disconnect the cable at the base of the pole
2. Undo the locknuts
3. Support the luminaire and undo the clamp bolts
4. Remove the luminaire and cable from the pole

TROUBLE SHOOTING

In the event that your Aero V LED luminaire fails to operate properly,

First check that:

1. The line voltage “AT THE UNIT” is correct.
2. The fixture is wired correctly.
3. The fixture is earthed correctly (for safety).

If all the above have been checked and your fixture still does not operate properly, contact your local **Aldridge Traffic Systems Office**.

MAINTENANCE

Onsite maintenance is not required.

ENVIRONMENTAL

Replaced luminaire will be assessed by Aldridge Traffic Systems and either refurbished or sent to a certified recycling company that ensures all parts are recycled and nothing is sent to landfill.

CLEANING

The luminaire is self cleaning and should require minimum cleaning during its service life. The lens cover may be cleaned with any suitable non-abrasive glass cleaning solution, soap or detergent and rinsed with clean water.

 **CAUTION: DO NOT PERFORM MAINTENANCE OR CLEANING WHILE FIXTURE IS ENERGISED.**

These instructions do not claim to cover all details or variations in the equipment or procedure or process described, nor to provide directions for meeting every possible contingency during installation, operation or maintenance. When additional information is desired to satisfy a problem not covered sufficiently for user purpose, please contact your nearest Aldridge Traffic Systems Office.



Manufactured & Distributed by:
Aldridge Traffic Systems
ABN 98 001 678 557

Head Office
31 Brisbane Street
Eltham VIC 3095

Telephone (03) 9430 0222
Facsimile (03) 9430 0244